



## Red Rock Creek Phase I (Idaho CD)

Program	Animal Feeding Operations (AFOs)
Lead Implementer	Idaho County Conservation District
Funders	Idaho Department of Environmental Quality, Private Party
Other Organizations	Idaho Soil and Water Conservation Commission
Project Primary Contact	Stefanie Hays (stefanie.hays@id.nacdnet.net)
Project Stage	Implementation
Duration	2019 - 2022

### Agricultural Projects & Practices ➤ Animal Feeding Operations (AFOs)

Red Rock Creek is a 26,482 acre watershed, flowing into Cottonwood Creek at stream mile 7.0; which then flows into the South Fork of the Clearwater River. There are currently 16 separate worksites. Work will be with livestock feeding areas.

Technical Assistance hours are captured in the combined Technical assistance request for Idaho, Lewis, and Clearwater county. TA breakdown: FY2020: 109.5 hours; FY2019: 42 hours

#### Key Accomplishments

- Landowner Site Visits: 24

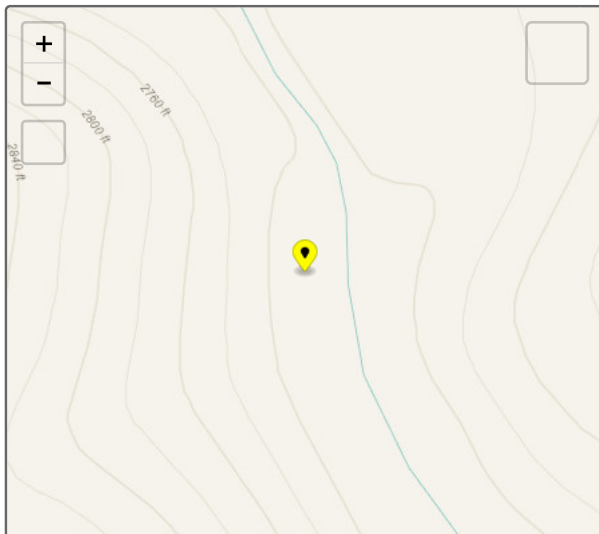
#### Project Themes

- Agricultural Lands
- Habitat and Species
- Healthy Watersheds
- Water



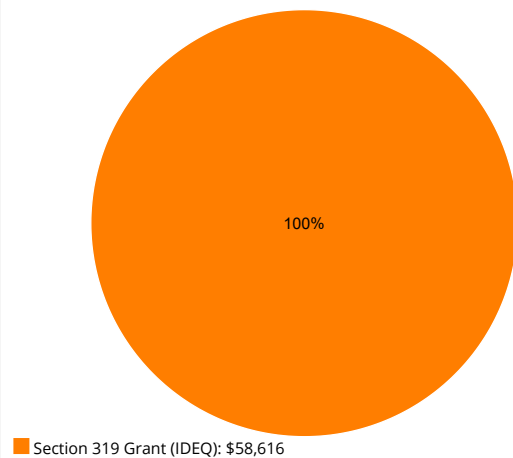
Access Road  
Credit: E Rowan

#### Location



#### Expenditures

Expenditures by Funding Source to Date: \$58,616.25



## Photos

### Before



Spring Lot  
Credit: E Rowan

### After



Heavy Use Feeding Pad  
Credit: E Rowan



Access Road with culvert  
Credit: E Rowan

*Tracker tells stories at a broad-brush level. Individual project performance measures and expenditures should not be relied upon for complete and total accuracy and should be confirmed with a project's lead implementer. Project locations subject to confidentiality provisions under state and federal law specify the location of a local conservation district or USDA service center office.*