



IDAHO SOIL & WATER
CONSERVATION COMMISSION

Sagebrush Landscape Restoration (NRCS, NFWF)

Program	Sagebrush Landscape Restoration
Lead Implementer	Idaho Soil and Water Conservation Commission
Funders	Governor's Office of Species Conservation, Idaho Soil and Water Conservation Commission, National Fish & Wildlife Foundation
Other Organizations	Idaho Department of Fish and Game, The Nature Conservancy, Trout Unlimited, U.S. Fish and Wildlife Service, U.S. Natural Resources Conservation Service
Project Primary Contact	Derek Mynear (derek.mynear@swc.idaho.gov)
Project Stage	Implementation
Duration	2018 - 2020

Natural Resource Projects & Practices ➤ Sagebrush Landscape Restoration

This National Fish and Wildlife Foundation (NFWF) funded grant primarily focuses on restoring lost hydrology to wet meadow, mesic, and wetland areas. This position works on restoring, enhancing, and/or protecting sagebrush steppe, maintaining/building strong collaborative partnerships, communicating about the program, and ensures a well-trained workforce exists to deliver supporting landscape scale conservation. Works with landowners, local, state, federal, and NGOs. Landscape scale improvements to these limited resources are expected to benefit from implementation across jurisdictional boundaries and are expected to have the greatest impact to sage-steppe obligates and associated species.



Sage Grouse
Credit: Unk

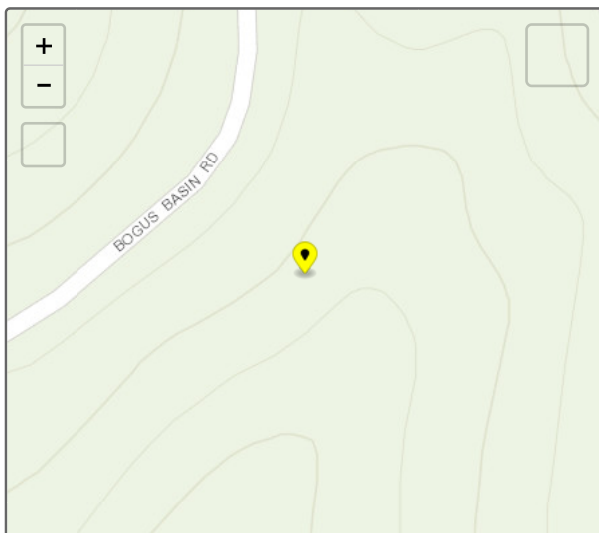
Key Accomplishments

- Habitat Restoration - Erosion Control - Structures Installed (NFWF Landscape Restoration Grant): 5
- Habitat Restoration - Instream Structures Installed (NFWF Landscape Restoration Grant): 367
- Habitat Restoration - Land Restoration (NFWF Landscape Restoration Grant): 93.00 acres
- Habitat Restoration - Riparian Restoration (NFWF Landscape Restoration Grant): 133.00 acres

Project Themes

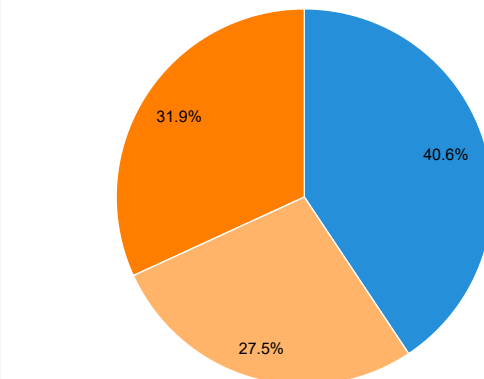
- Habitat and Species
- Rangelands

Location



Expenditures

Expenditures by Funding Source to Date: \$331,371.09



■ Sagebrush Landscapes Program (NFWF): \$134,679
 ■ In-Kind Match for NFWF Sagebrush (ISWCC): \$91,148
 ■ In-Kind Match for NFWF Sagebrush (OSC): \$105,544

Photos

During



Beaver Dam Analogue
Credit: Unk



Channel Spanning Large Woody Debris
Credit: Derek Myneer

After



Beaver Dam Analogue-Baugh Creek Post-Fire
Credit: Derek Myneer



Mid-Channel Large Woody Debris
Credit: Derek Myneer

Tracker tells stories at a broad-brush level. Individual project performance measures and expenditures should not be relied upon for complete and total accuracy and should be confirmed with a project's lead implementer. Project locations subject to confidentiality provisions under state and federal law specify the location of a local conservation district or USDA service center office.

Project last updated 9/28/2020