



Lawyer Creek Watershed Improvements (Idaho CD)

Program	Water Quality Implementation
Lead Implementer	Idaho County Conservation District
Funders	Idaho Soil and Water Conservation Commission, Private Party
Project Primary Contact	Stefanie Hays (stefanie.hays@id.nacdn.net)
Project Stage	Completed
Duration	2007 - 2010

Natural Resource Projects & Practices ➤ Water Quality Implementation

The Lawyer Creek watershed improvement project in Idaho county was a coordinated effort to work with private landowners to implement practices that would work toward reducing 303d listed pollutants. It was a coordinated effort with Lewis CD having a project on the north side of the watershed.

Key Accomplishments

- Access Road (linear feet): **3,423.00 lf**
- Fence (linear feet): **8,116.00 lf**
- Heavy Use Area Protection (number): **7**
- Nutrient Management (number): **32**
- Pipeline (linear feet): **5,143.00 lf**
- Pumping Plant For Water Control (number): **1**
- Residue Management, Direct Seed (acres): **2,528.00 acres**
- Residue Management, Mulch Till (acres): **806.00 acres**
- Spring Development (number): **2**
- Stream Crossing (number): **1**
- Structure For Water Control (linear feet): **110.00 lf**
- Water Well (number): **1**
- Watering Facility (number): **9**

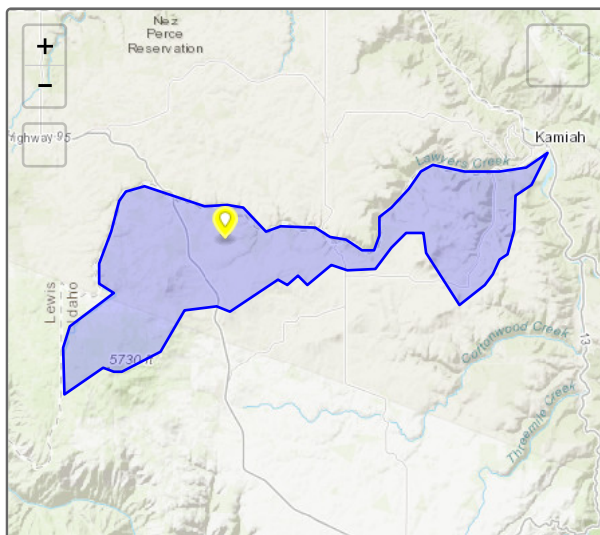


Fence and Crossing
Credit: E Rowan

Project Themes

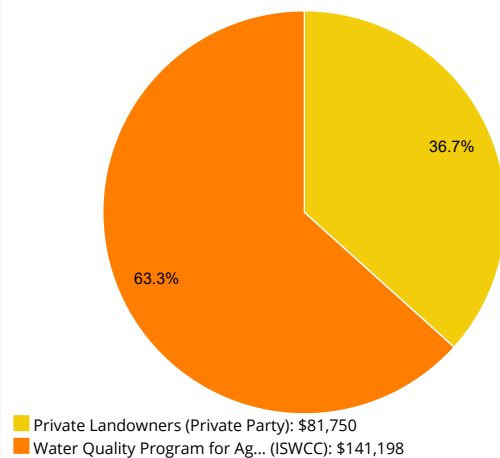
- Agricultural Lands
- Healthy Watersheds

Location



Expenditures

Expenditures by Funding Source to Date: \$222,948.00



Photos

Before



Stream Survey
Credit: Barbara Seaman

After



Watering Facility
Credit: E Rowan

Tracker tells stories at a broad-brush level. Individual project performance measures and expenditures should not be relied upon for complete and total accuracy and should be confirmed with a project's lead implementer. Project locations subject to confidentiality provisions under state and federal law specify the location of a local conservation district or USDA service center office.