



IDAHO SOIL & WATER  
CONSERVATION COMMISSION

## Highly Erodible Lands (HEL) Landowner Assistance (Twin Falls CD)

Program	District Technical Assistance (ISWCC)
Lead Implementer	Idaho Soil and Water Conservation Commission
Other Organizations	Twin Falls Conservation District
Project Primary Contact	Chuck Pentzer (cpentzer@swc.idaho.gov)
Project Stage	Completed
Duration	2017 - 2018

### Conservation Support > District Technical Assistance (ISWCC)

Assist landowners with HEL Project, and help to develop a tool growers can use in the field for HEL Farm Bill compliance, and reduce wind erosion during the critical period.

*No Key Photo provided*

This project stalled because of redirections with nrcs and priority changes with the district to provide for the Deep Soil Sampling Project. (DSS).

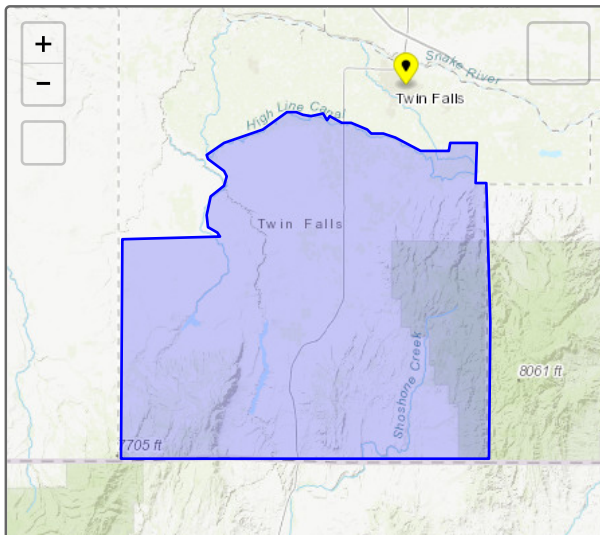
### Key Accomplishments

- Engineering & Technical Assistance Hours Requested: 80
- Engineering & Technical Assistance Hours Allocated: 75
- Engineering & Technical Assistance Hours Provided: 39
- Engineering & Technical Assistance Value: \$2,387.58

### Project Themes

- Agricultural Lands
- Healthy Watersheds
- Soils

### Location



### Expenditures

*No expenditures provided*

## Photos

*No additional photos provided*

---

*Tracker tells stories at a broad-brush level. Individual project performance measures and expenditures should not be relied upon for complete and total accuracy and should be confirmed with a project's lead implementer. Project locations subject to confidentiality provisions under state and federal law specify the location of a local conservation district or USDA service center office.*

---

Project last updated 10/11/2019